



SPS HOME

OFF-LINE UPS 400 VA & 600 VA

► SPS HOME: Full protection for office and domestic units

The numerous types of electrical disturbances (e.g. mains failures, power cuts, blackouts, over-voltages,...) arising from the various causes (e.g. storms, lightning, excessive demand, natural disasters, accidents etc...) present problems to all electricity users, and a constant challenge to all computer users who depend on a correct and stable power supply to be able to work safely and efficiently. Electrical problems are responsible for the largest number of faults in computer systems, far more even than those caused by computer viruses. The best solution is therefore to seek protection with an Uninterruptible Power Supply.

The SALICRU **SPS HOME** series Uninterruptible Power Supply, with off-line technology, come in power ratings of 400VA and 600 VA and are the best possible protection for both domestic and professional single-post computer environments.

Each UPS provides 6 output sockets with sufficient capacity for the central unit and all of the associated peripherals. In order to achieve greater total protection, telephone/ADSL protection is provided, preventing the entry of over-voltages and/or electrical noise through the telephone line. Completing the overall protection, the UPS units come complete with monitoring and file closing software to facilitate orderly shutdowns in the event of extended power cuts.

The SALICRU **SPS HOME** series UPS are also recommended for multimedia audio-visual environments for entertainment and domestic leisure.

► PERFORMANCE

- Off-line technology.
- Multiple base design with 6 schuko sockets.
- 4 sockets with UPS protection; all sockets with over-voltage protection.
- On/Off multifunction pushbutton.
- Self-detection of 50 or 60 Hz frequency.
- LEDs indicating mains, battery mode and battery failure.
- USB port for monitoring and file closing software.
- Telephone/ADSL line protection by RJ-45 port.
- Batteries user replaceable.
- Cold Start function.
- Anchoring for wall fixture.
- Automatic restart after each power cut and at the end of autonomy.
- Economic guarantee for connected units up to €70,000.



► SPS HOME equipment

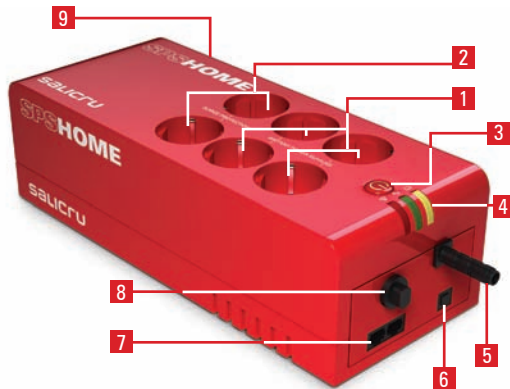
► APPLICATIONS: Versatile protection for single-post environments

Designed in multiple base format, the **SPS HOME** series UPS have 6 schuko bases duly turned to enable trafo connections and with child protection by obturators, with a capacity in computer systems to protect both the PC and all of its associated peripherals (screen, printer, external hard disk, router, ...) and TV and other components in multimedia systems (decoder, DVD, home cinema, Hi-Fi, TDT, ...).



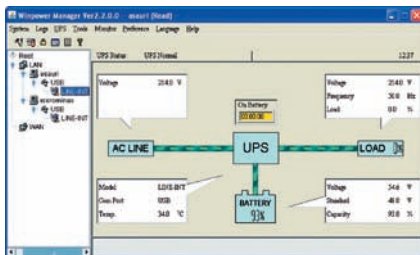
DESCRIPTION

1. 4 x UPS sockets.
2. 2 x over-voltage protection sockets.
3. On/Off multifunction pushbutton.
4. LED indicators.
5. AC input.
6. USB port.
7. RJ-45 telephone/ADSL protection.
8. Protection breaker.
9. Anchoring for wall fixture.



WIN POWER software

- ▶ UPS monitoring and management software for closing files/applications.
- ▶ Supports Windows, Linux, Unix and Mac.



COMPLETE solution

- ▶ **SPS HOME** series UPS.
- ▶ UPS/PC USB connection wire.
- ▶ WinPower software CD.
- ▶ Instructions manual.
- ▶ Warranty certificate.
- ▶ Economic guarantee.

SALICRU warranty

- ▶ On-line registry at www.salicru.com.
- ▶ 2-year warranty.
- ▶ Batteries covered by the warranty.



TECHNICAL CHARACTERISTICS

MODEL	SPS HOME		
TECHNOLOGY	Off-line		
INPUT	Nominal voltage	230 V	
	Voltage range	Up to 170V – 265V	
	Nominal frequency	50 or 60 Hz	
	Frequency range	±10%	
	Frequency self-detection	Yes	
OUTPUT	Voltage	230 V	
	Voltage precision ⁽¹⁾	±10%	
	Frequency ⁽¹⁾	50 or 60 Hz	
	Frequency precision ⁽¹⁾	±1%	
	Wave form ⁽¹⁾	Pseudo sinusoidal	
	Socket type	Schuko	
	No. sockets with autonomy + protection	4	
	No. sockets with protection	2	
PROTECTION	Transfer time	2/6 ms	
	Input	Breaker, user-resettable	
	Overload	AC mode and battery mode	
	Short-circuit	Immediate interruption	
	Protection against peaks	480 joules, 2 ms	
BATTERY	Data line	Tel / Fax, modem, ADSL internet + Ethernet 10/100 Mb	
	Type	Sealed, lead-calcium, free-maintenance, useful life 3-5 years	
	Recharging time	8 hours	
	Autonomy	Up to 20 minutes	
	Replacement	By the user	
FUNCTIONS	Protection	Against deep discharge Fuse against short-circuit	
	Cold start	Yes	
INDICATIONS	Automatic restart	Yes	
	Mains present	Green led	
ALARMS	Battery mode	Yellow led	
	Battery failure	Red led	
	Battery mode output	Audible alarm every 5 seconds	
COMMUNICATION	Low battery (end of autonomy)	Audible alarm every second	
	Inverter failure	Permanent alarm	
	Port	USB	
STANDARDS	Software	Monitoring and management for the Windows, Linux, Unix and Mac	
	Generals	Maximum altitude	3,500 m.a.s.l.
	Relative humidity	Up to 95% without condensing	
	Temperature	0°C ÷ +40°C	
	Acoustic noise @ 1 metre	<40 dB	
STANDARDS	Safety	EN-62040-1-1; EN-60950-1	
	Electromagnetic compatibility (EMC)	EN-62040-2	
	Marking	CE	
Quality and Environmental Management	ISO 9001 and ISO 14001 TÜV		

(1) Battery mode.

RANGE

MODEL	UPS POWER (VA / W)	TOTAL POWER (VA / W)	DIMENSIONS (D x W x H) mm.	WEIGHT (Kg)
SPS.400.HOME	400 / 200	1.150 / 1.150	295 x 120 x 85	3,2
SPS.600.HOME	600 / 300	1.150 / 1.150	295 x 120 x 85	3,5

Data liable to changes without prior notice.

902 48 24 00*
+34 93 848 24 00**
WWW.SALICRU.COM

SALICRU
AVDA. DE LA SERRA 100 - 08460 PALAUORDERA - SPAIN - FAX +34 93 848 11 51