

SPS SOHO

LINE-INTERACTIVE UPS 400 VA - 2000 VA

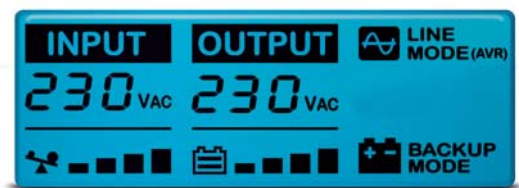
► SPS SOHO: The best electrical protection for information systems

The SALICRU **SPS SOHO** series includes all the necessary performance for improved protection of computer equipment. The **SPS SOHO** series are uninterruptible power supply systems (UPS) with line-interactive technology available in 400, 600, 800, 1000, 1400 and 2000 VA. The permanent stabilisation of the input voltage causes less use of the batteries to achieve maximum autonomy if necessary.

For better integration in the protected environment, they also include USB communication with complete monitoring and control software capable of automatically turning off the systems in the event of long cuts. They also include as standard a powerful display with information on the input voltage, output voltage, charge level, battery level and operation status. And for complete protection, they include a filter for the data/modem/ADSL line. All of these features make them the UPS solution with the best quality/price ratio on the market.



► SPS SOHO models



► LCD display

► PERFORMANCE

- A complete display with all of the necessary information.
- Line-interactive, microprocessor-controlled technology.
- Permanent stabilisation with Boost / Buck technology.
- Cold Start function.
- Battery can be changed by the user, HotSwap function.
- USB communications port.
- Monitoring and management software included.
- Protection of RJ-45 data / modem line.
- Automatic restart function after a mains cut.
- Load connection by schuko-type sockets.
- Protection against overloads, short-circuits and transients.

► APPLICATIONS: The best ally of information technologies

The high value of the information stored and managed by computer systems and the high indexes of disturbance in the electrical supply (cuts, micro cuts, fluctuations,...) make the **SPS SOHO** series UPS an essential element in protecting your computer systems. Your PCs, servers and other peripherals can offer you maximum output if they are well protected.

► DESCRIPTION

1. AC input.
2. Output bases.
3. USB communication port.
4. Data/ADSL line protection.
5. Thermal input protection.



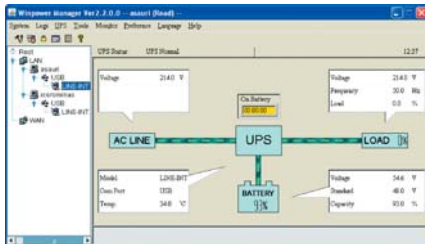
► 400 / 600 / 800 models



► 1000 / 1400 / 2000 models

► CONTROL software

- UPS monitoring and management software.
- Supplied on CD and valid for the Windows, Linux and Mac families.



► Flow diagram

► COMPLETE solution

- **SPS SOHO** series UPS.
- UPS / PC USB communication cable.
- Monitoring software CD.
- Data line / modem / ADSL cable.
- Instructions manual.
- Guarantee certificate.

► SALICRU guarantee

- 2-year guarantee for product replacement.
- Batteries covered by the guarantee.
- Possible extension of the guarantee.



► TECHNICAL SPECIFICATIONS

MODEL		SPS 400 / 600 / 800 SOHO	SPS 1000 / 1400 / 2000 SOHO
TECHNOLOGY		Line-Interactive	
INPUT	Nominal voltage	220 V, 230 V, 240 V	
	Voltage range	Up to 162 V ÷ 290 V	
	Nominal frequency	50 / 60 Hz	
	Frequency auto-sensing	Yes	
	Stabilization	Buck / Boost	
OUTPUT	Voltage	220 V, 230 V, 240 V	
	Voltage accuracy ⁽¹⁾	± 10%	± 5% for load < 50% ⁽²⁾
	Frequency ⁽¹⁾	50 / 60 Hz	
	Frequency accuracy ⁽¹⁾	± 1 Hz	
	Wave shape ⁽¹⁾	Simulated sinewave	
	Outlet type	Schuko	
	Outlet quantity	2	3
	Transfer time	2 / 4 ms	
PROTECTION	Input	Rearm thermal	
	Overload	AC and battery modes	
	Short-circuit	Immediate shutdown	
	Data line (RJ-45)	Tel / fax, modem, ADSL internet + Ethernet network 10/100 Mb	
BATTERY	Type	Sealed lead acid batteries, maintenance free, average life 3-5 years	
	Recharge time	6 - 10 hours up to 90%	
	Autonomy ⁽³⁾	Up to 20 minutes	Up to 40 minutes
	Replacement	By user	
	Protection	Against deep discharge Against short-circuit through fuses	
FUNCTIONS	Cold Start	Yes	
	Automatic restart	Yes, after end of autonomy	
INDICATORS	LCD multifunction	Yes	
	Displayed values	Input voltage / output voltage	
	Levels	Connected load / overload / battery capacity	
	Operating modes	Normal / Battery / AVR (stabilizer)	
ALARMS	Battery mode output	Beep every 10 seconds	
	Low battery (end of autonomy)	Beep every second	
	Battery replacement	Beep every 2 seconds	
	Fault	Beep continuously	
	Overload	Beep every 0,5 seconds	
COMMUNICATION	Port	USB	
	Software	Monitoring and management for Windows family, Linux and Mac	
GENERALS	Maximum altitude	2400 m.a.s.l.	
	Relative humidity	Up to 95%, non-condensing	
	Temperature	0° C ÷ + 40° C	
	Acoustic noise at 1 metre	< 40 dB	< 45 dB
STANDARDS	Safety	EN 62040-1-1; EN 60950-1	
	Electromagnetic Compatibility (EMC)	EN 62040-2	
	Operating	EN 62040-3	
	Marking	CE	
	Quality and Environmental management	ISO 9001 and ISO 14001 TÜV	

- (1) Battery mode
 (2) ± 10% for SPS.1000.SOHO
 (3) PC + LCD 15"

► RANGE

MODEL	POWER (VA / W)	DIMENSIONS (D x W x H mm)	WEIGHT (Kg)
SPS.400.SOHO	400 / 240	330 x 100 x 140	5
SPS.600.SOHO	600 / 360	330 x 100 x 140	6
SPS.800.SOHO	800 / 480	330 x 100 x 140	6,5
SPS.1000.SOHO	1000 / 600	405 x 145 x 205	9
SPS.1400.SOHO	1400 / 840	405 x 145 x 205	9,5
SPS.2000.SOHO	2000 / 1200	405 x 145 x 205	10

OFFICE GERMANY
FSI Industrievertretung
 Gutenbergstr. 42
 64289 Darmstadt
 Tel. 06151-9671475
 Fax.06151-9671495
 e-mail: FSI.Frank.Sshleier@t-online.de

WWW.SALICRU.COM

SALICRU

AVDA DE LA SERRA 100 - 08460 PALAUARDERA - SPAIN - FAX +34 93 8481151

ED. MAY 2008

UNINTERRUPTIBLE POWER SUPPLY (UPS)

Data liable to changes without prior notice.

(*) Spain only (**) Rest of World